



Kimberley Stakeholders Engagement Forum

Nicole Lockwood, Deputy Chair, Infrastructure WA

Lance Glare, Acting CEO, Infrastructure WA

November 2019

infrastructure.wa.gov.au



Key functions – phase one

Phase 1

- 20-year State Infrastructure Strategy
- Coordinate the State's submissions to Infrastructure Australia
- Review and report on infrastructure proposals prior to submission to Infrastructure Australia
- Provide advice to State agencies on preparation of infrastructure proposals
- Provide advice to Premier on infrastructure priorities; funding and financing; and any other infrastructure matters
- Provide advice and assistance to State agencies in the preparation of strategies, plans and policies
- Review and report on completed projects
- Promote public awareness of infrastructure matters



Key functions – phase two

Phase 2

- Assess and report on major infrastructure proposals
- 10-year State Infrastructure Programme (Government)
- Monitor and report on progress in implementing the Strategy



Image: Tourism WA



Improving investor confidence, supporting jobs

State Infrastructure Strategy

Identify needs and priorities to guide future decisions

Annual 10-year State Infrastructure Programme

'Pipeline' of projects – visibility beyond the Budget and forward estimates

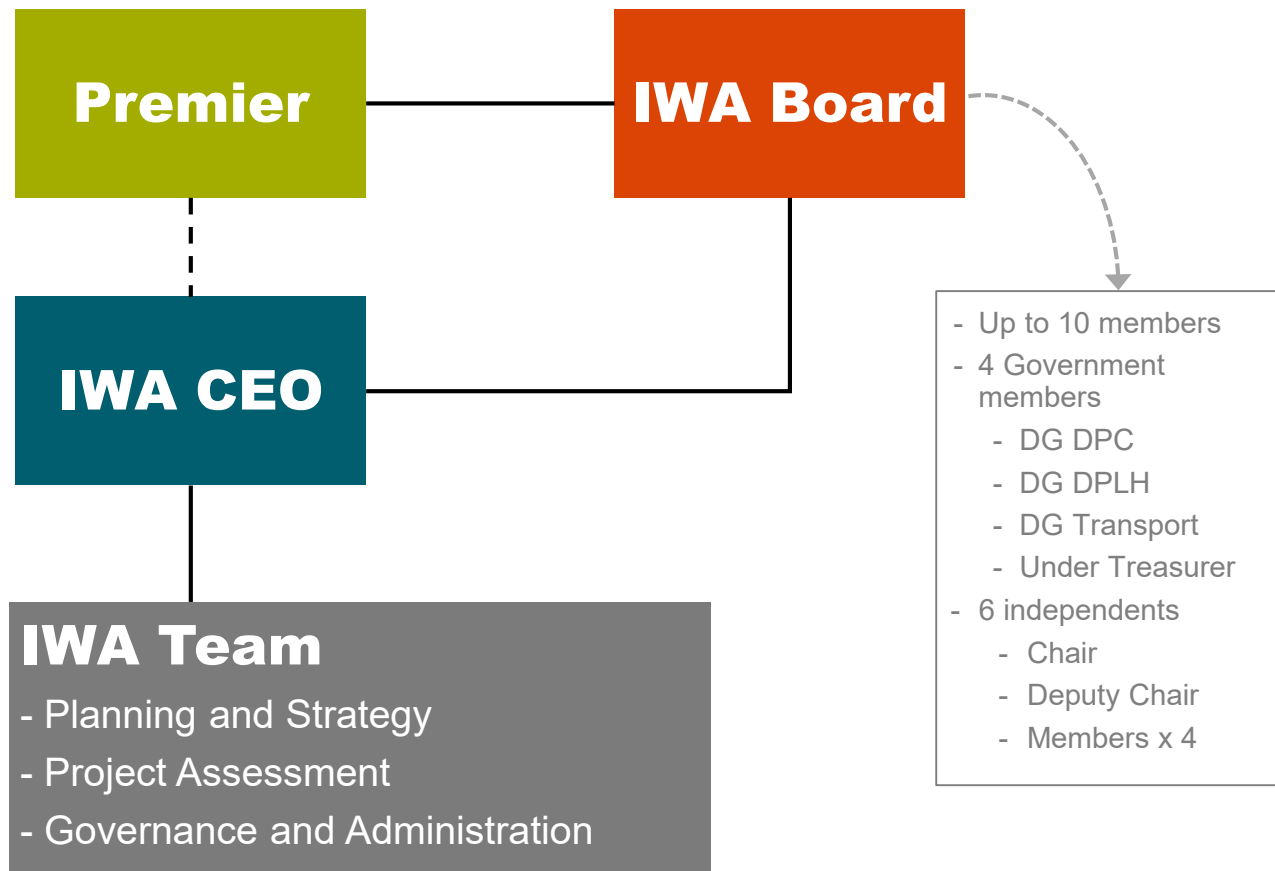
Better quality infrastructure proposals

Right projects at the right time, Cwth' infrastructure funding

Funding / financing advice

Advice on funding & financing options for different projects

Governance



Roles for Government

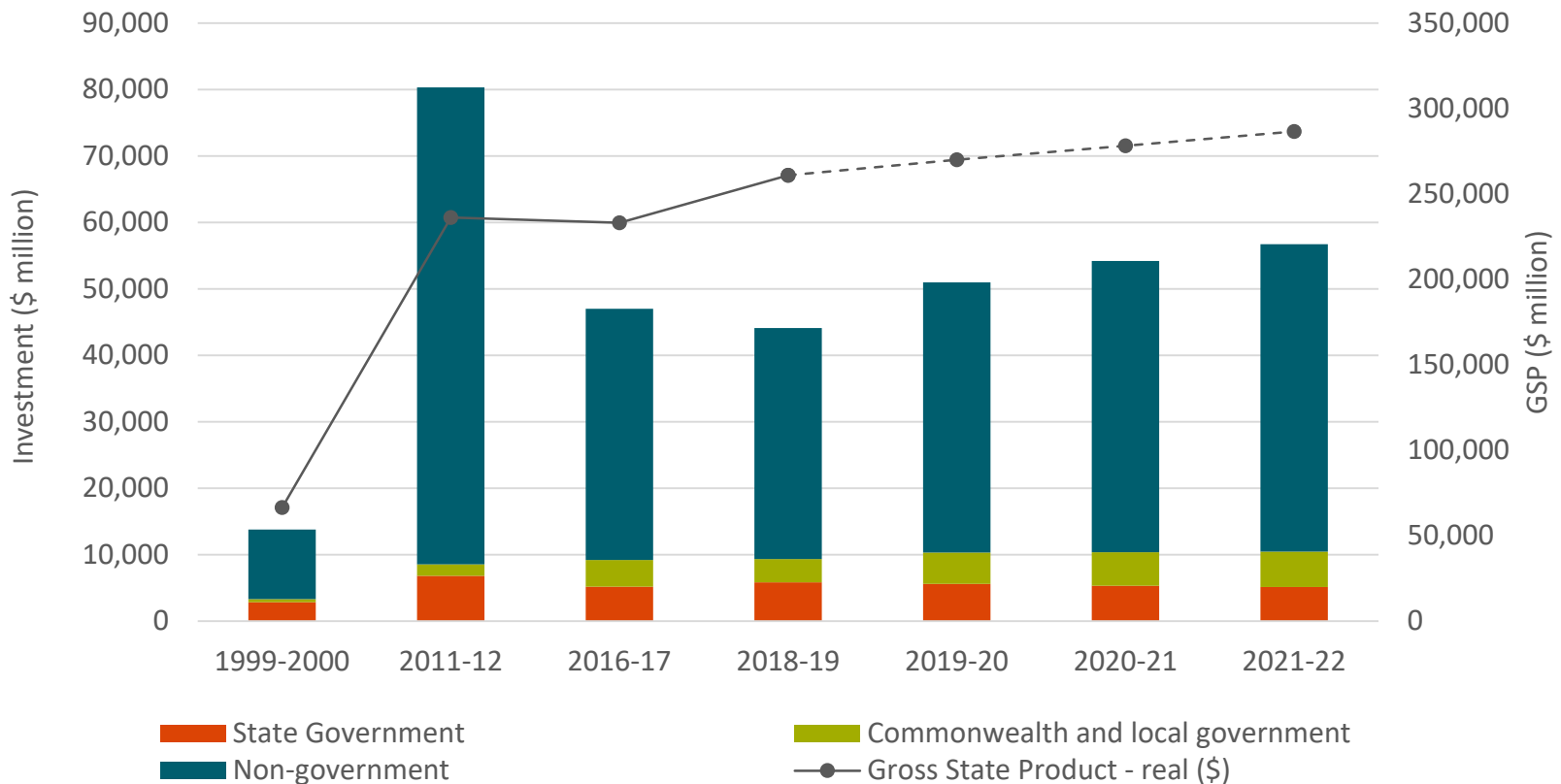
- Act applies to all departments, sub-departments, statutory authorities and Government Trading Enterprises
- Must respond to the State Infrastructure Strategy's recommendations within specified timeframe
- State agencies must align strategies/plans/policies with the State Infrastructure Strategy's recommendations (to the extent Government supports recommendations)
- Prepare annual State Infrastructure Programme (10 year):
 - To take into account the State Infrastructure Strategy's recommendations (to the extent supported by Government)
 - Need for 'pipeline of projects' to provide greater stability for investment decision-making
 - Must cover the State Budget and forward estimates, plus 5-10 year horizon
 - Made publicly available within 3 months of the State Budget being handed down.



Quality and completeness

- Improving short/medium/long-term planning within and across sectors, and quality of infrastructure proposals
- Existing agency expertise is key (including information, plans and strategies)
- Holistic approach - application across sectors is critical
- Evidence-based approach
- Consideration of trends and impacts
- Use of consistent assumptions
- Opportunity to better coordinate and align, and support improved investment decision-making

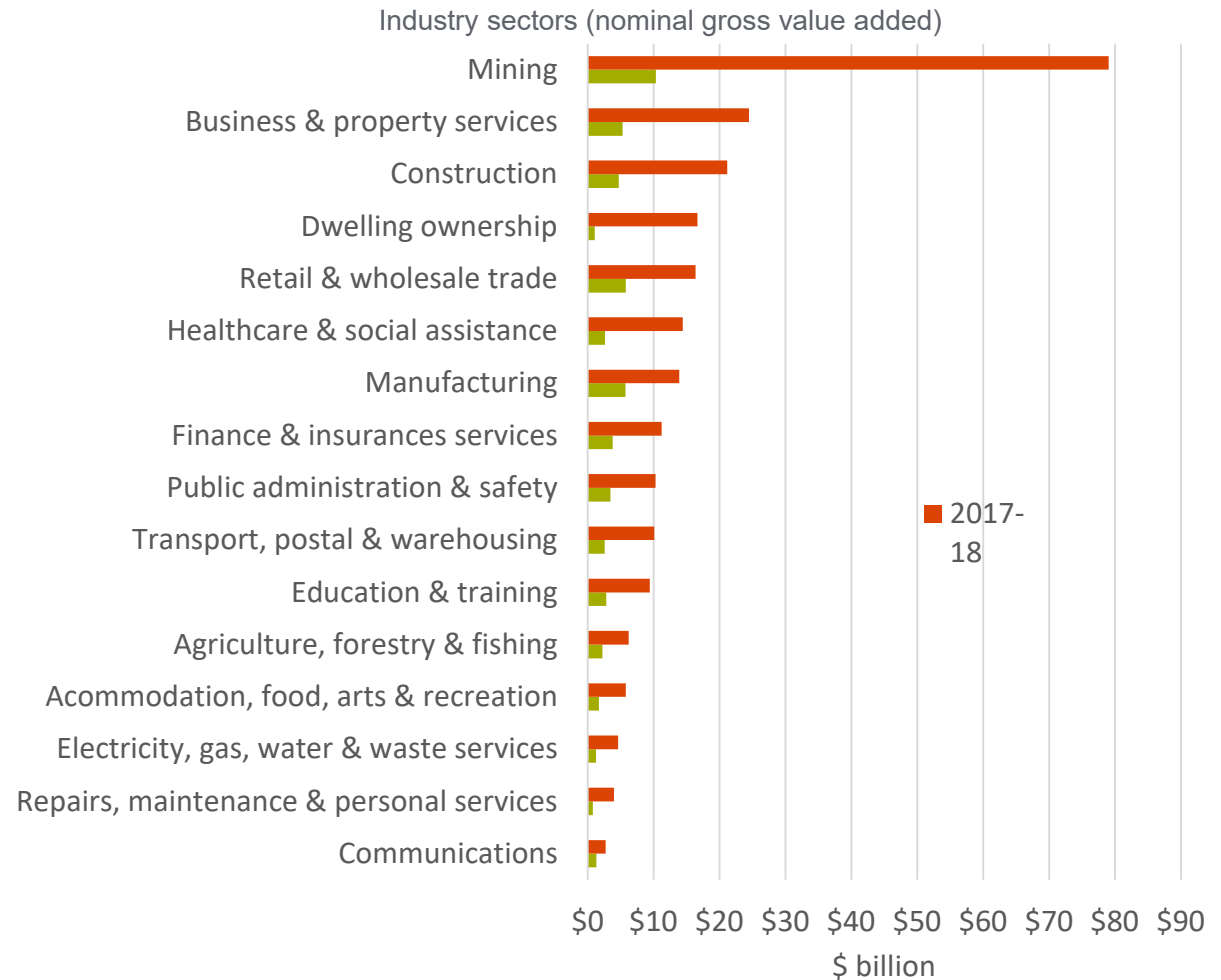
Infrastructure investment in WA



Based on ABS data, supplied by Department of Treasury

The context - economy

- Economic growth and diversification
- Productivity
- Influence of global factors
- Affordability



State Infrastructure Strategy

- Long-term infrastructure strategy (20+ years) addressing a broad range of infrastructure, including freight and transport
- Strategy to be evidence based, and consider existing strategies and policies of government
- IWA will consult broadly in preparing the strategy, both internal and external to government
- Regional interests/matters are key
- Iterative
- Scale of the task



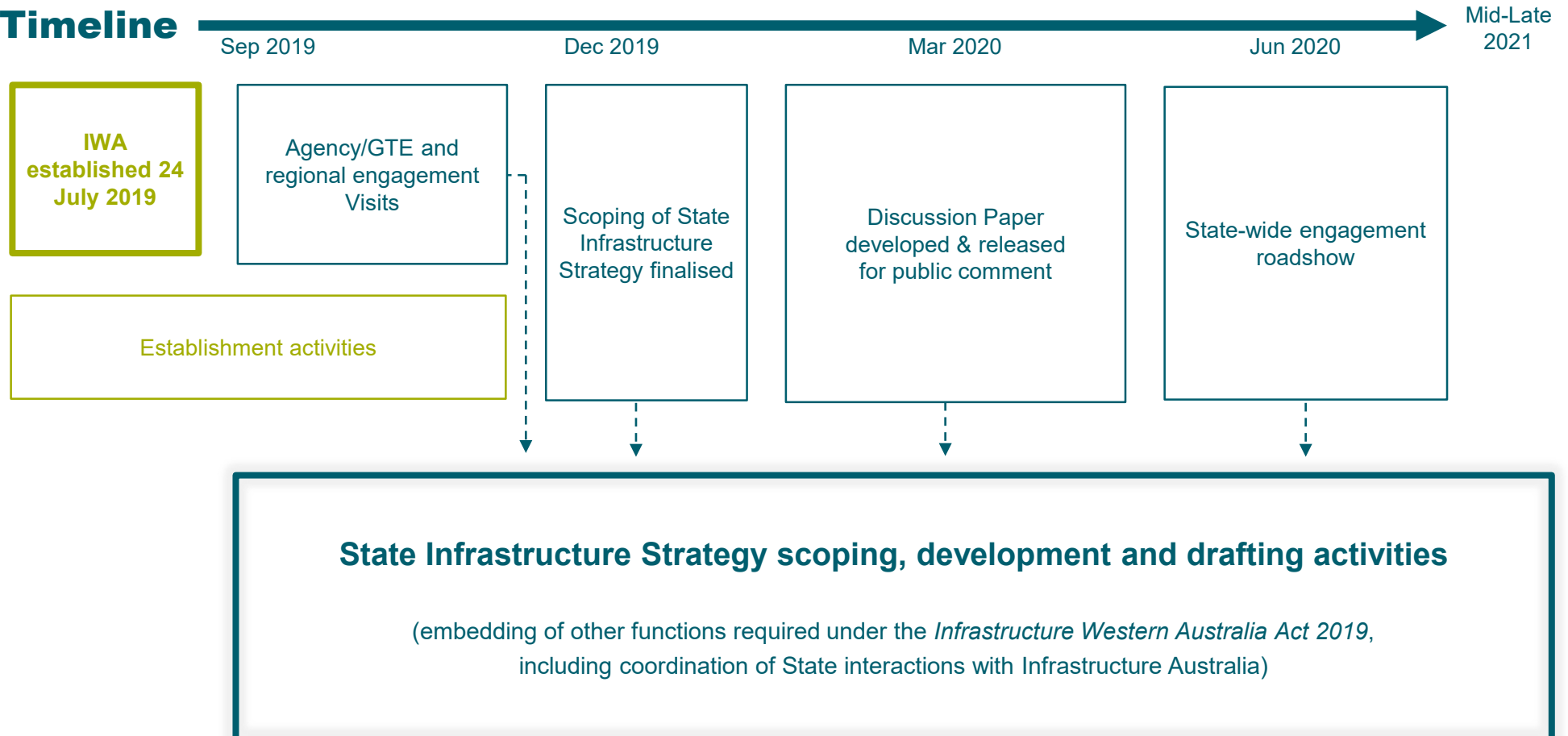
Other considerations

- Technology and disruption
- Growing importance of data
- Urbanisation and shifting urban development patterns
- Expectations of infrastructure users and changing behaviours
- Environmental challenges and resilience
- Doing more with less



Developing the SIS - first 12 months

Timeline



Regional perspectives: challenges and opportunities

Challenges

- Ongoing development and the ability of infrastructure to keep up
- Remote and Aboriginal communities
- Economy and employment
- Housing
- Social



Regional perspectives: challenges and opportunities

Opportunities

Rapid development also means the Kimberley is a region of significant growth potential.

- Tourism, including Aboriginal-based tourism
- Energy and gas
- Commodities and resources



Regional perspectives: challenges and opportunities

Opportunities (cont')

- Education
- Primary industries, including fisheries and aquaculture



Question prompts and break for morning tea

- What do you see as the key infrastructure issues, challenges and opportunities for infrastructure in the Kimberley?
- Where do you see Infrastructure WA could add value to the Kimberley region?
- What is the role of the Kimberley in growing Western Australia?
- How much growth can and should the Kimberley accommodate?
- What services are we likely to use in the future that may require supporting digital infrastructure?

Open forum

Questions, comments and perspectives from the floor



We need your input

- IWA engagement program
- Developing the State Infrastructure Strategy
- Discussion paper and regional roadshows



Photo: Abby Murray

Contact us



Get in touch

Email: enquiries@infrastructure.wa.gov.au



infrastructure.wa.gov.au

