



Great Southern Stakeholders Engagement Forum

John Langoulant AO, Chairperson, Infrastructure WA

Lance Glare, Acting CEO, Infrastructure WA

December 2019



About us

- Infrastructure WA an election commitment in *Plan for Jobs*
- Recommended by Special Inquiry into Government Programs and Projects
- Strong industry support
- Other jurisdictions
- Infrastructure WA's role is to advise and assist Government on matters relating to infrastructure
- Reports directly to the Premier
- Importance of the regions



Image Tourism Western Australia

Key functions

Phase 1

- 20-year **State Infrastructure Strategy**
- Coordinate State's submissions to **IA**
- Review and report on infrastructure proposals prior to submission to IA
- Provide **advice to State agencies** on preparation of infrastructure proposals
- Provide **advice to Premier** on infrastructure priorities; funding and financing; and any other infrastructure matters
- Provide **advice and assistance to State agencies** in the preparation of strategies, plans and policies
- Review/report on **completed projects**
- Promote **public awareness** of infrastructure matters

Phase 2

- Assess and report on **major infrastructure proposals**
- 10-year **State Infrastructure Programme** (Government)
- **Monitor and report** on progress in implementing the Strategy



Improving investor confidence, supporting jobs

State Infrastructure Strategy

Identify needs and priorities to guide future decisions

Annual 10-year State Infrastructure Programme

'Pipeline' of projects – visibility beyond the Budget and forward estimates

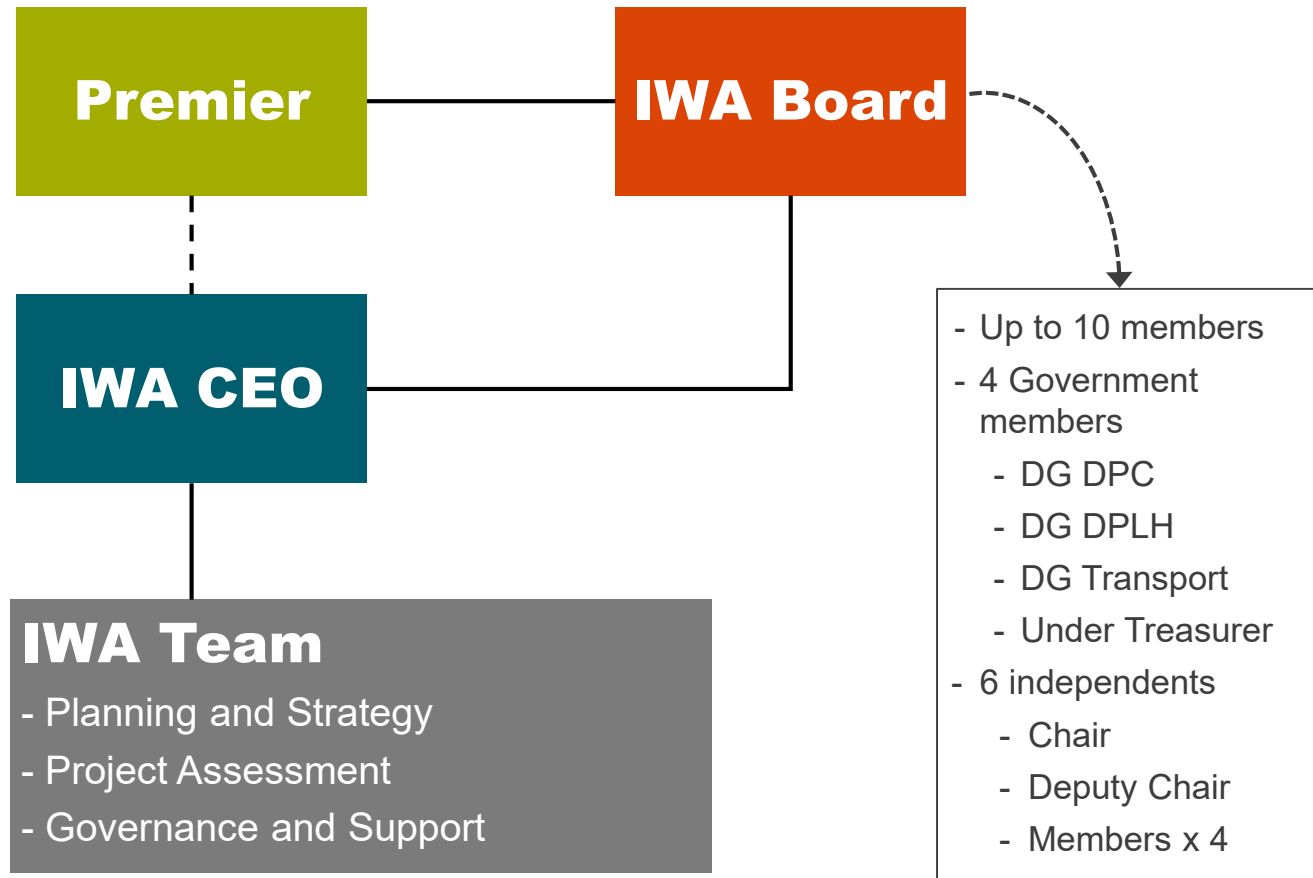
Better quality infrastructure proposals

Right projects at the right time, Cwth' infrastructure funding

Funding / financing advice

Advice on funding & financing options for different projects

Governance

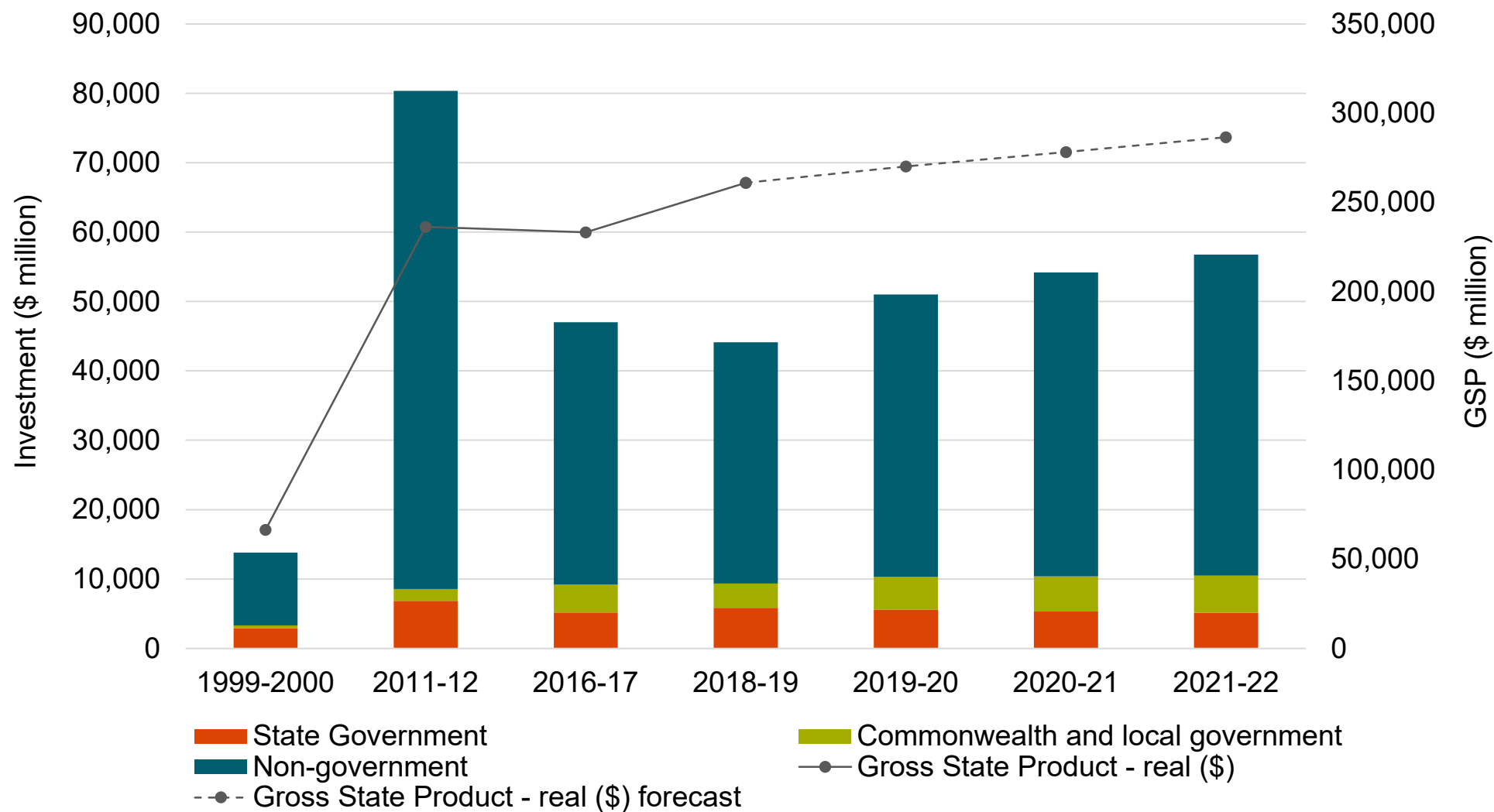


Roles for Government

- Act applies to all departments, sub-departments, statutory authorities and Government Trading Enterprises
- Must respond to the State Infrastructure Strategy's recommendations within specified timeframe
- State agencies must align strategies/plans/policies with the Strategy's recommendations (to the extent Government supports recommendations)
- Prepare annual State Infrastructure Programme (10-yr):
 - Take into account the Strategy's recommendations (to the extent supported by Government)
 - Must cover the State Budget and forward estimates, plus 5-10 year horizon
 - Made publicly available within 3 months of the State Budget being handed down.



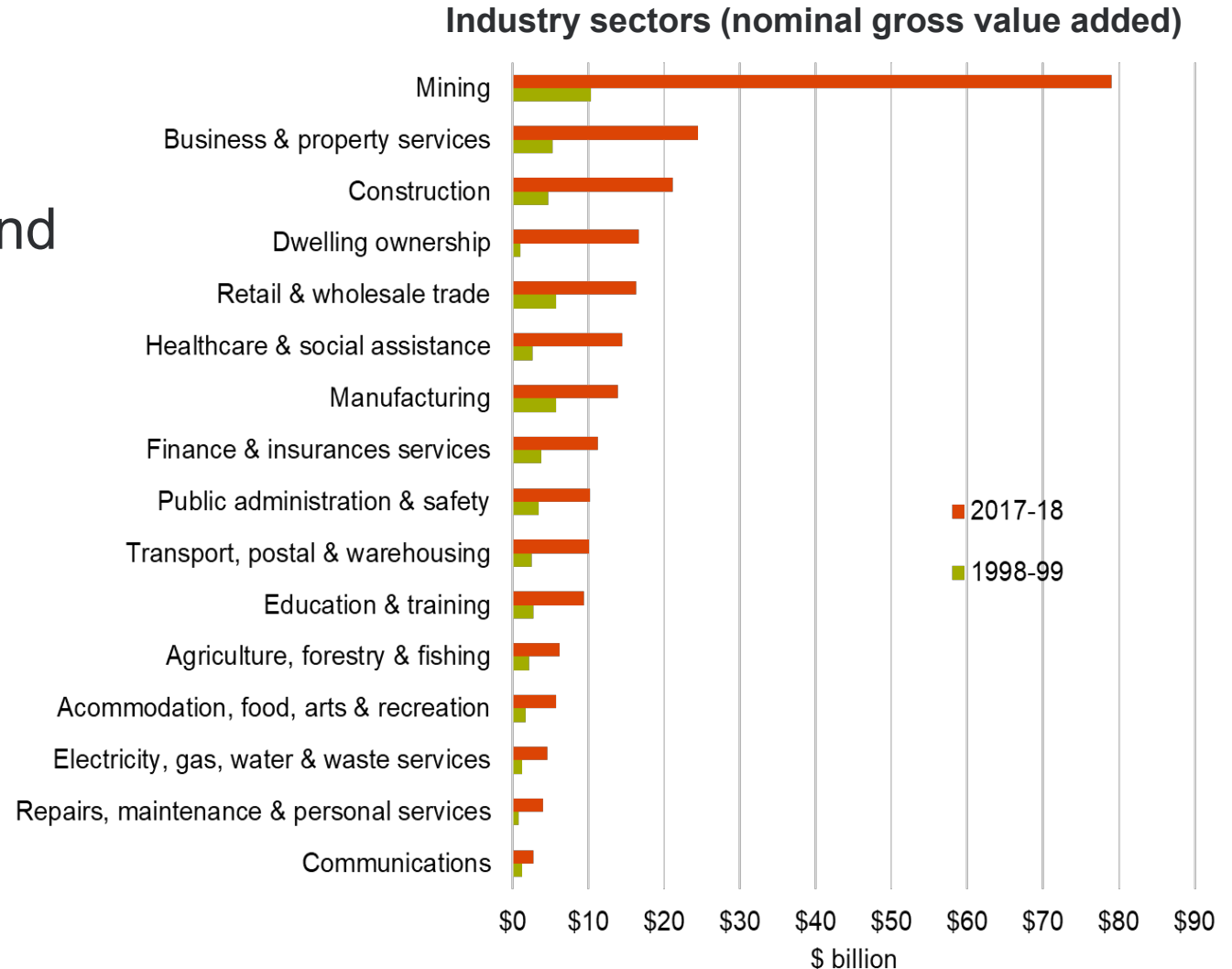
Infrastructure investment in WA



Based on ABS data, supplied by Department of Treasury

The context - economy

- Economic growth and diversification
- Productivity
- Influence of global factors
- Affordability



State Infrastructure Strategy

- Long-term infrastructure strategy (20+ years) addressing a broad range of infrastructure, including freight and transport
- Strategy to be evidence based, consider existing strategies and policies of government, and consider non-build solutions
- IWA will consult broadly in preparing the strategy, both internal and external to government
- Regional interests/matters are key
- Iterative
- Scale of the task



Image Tourism Western Australia

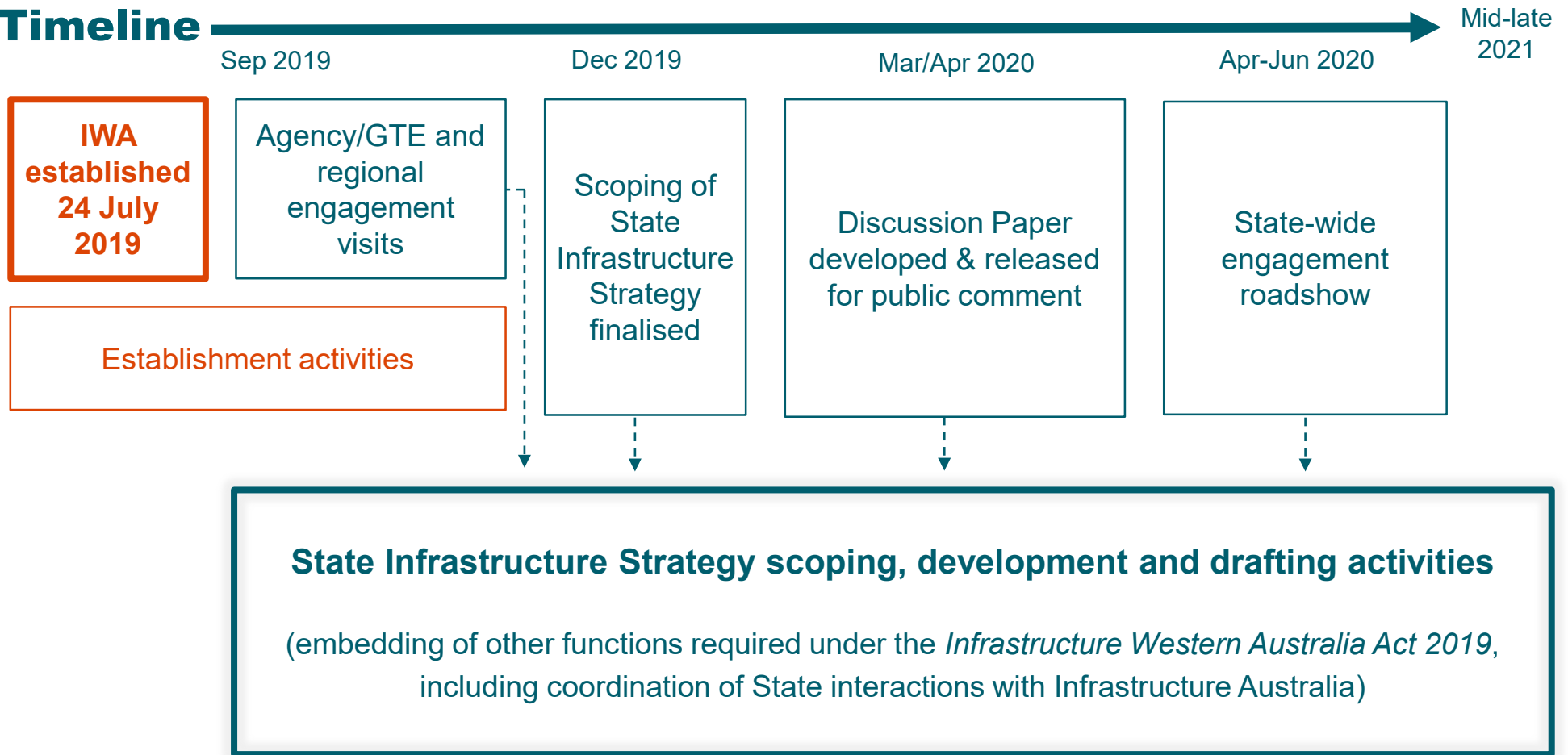
Other considerations

- Technology and disruption
- Growing importance of data
- Urbanisation and shifting urban development patterns
- Expectations of infrastructure users and changing behaviours
- Environmental challenges and resilience
- Doing more with less



Developing the SIS - first 12 months

Timeline



Regional perspectives: challenges and opportunities

Challenges

- Water security in a drying climate
- Economic diversification, growth and jobs
- Infrastructure to support growth
- Dispersed population across a large area
- Freight links
- Social challenges



Regional perspectives: challenges and opportunities

Opportunities

- Tourism and natural attractions
- Mineral resources and basic raw materials
- Agriculture, aquaculture, viticulture
- Renewable energy – wind, wave



Image Tourism Western Australia

Question prompts

What do you see as the key infrastructure issues, challenges and opportunities in the Great Southern region?

How much growth can and should the region accommodate?

What is the role of the Great Southern region in a growing Western Australia?

What services are we likely to use in the future that may require supporting digital infrastructure?

Where do you see Infrastructure WA could add value to the Great Southern region?

Open forum

Questions, comments and perspectives from the floor



Image Tourism Western Australia

We need your input

- IWA engagement program
- Developing the State Infrastructure Strategy
- Discussion paper and regional roadshows



Image Tourism Western Australia

Contact us



Get in touch

Email: enquiries@infrastructure.wa.gov.au

Phone: 08 6552 5229

Subscribe for updates via our website: infrastructure.wa.gov.au

infrastructure.wa.gov.au 



infrastructure.wa.gov.au 